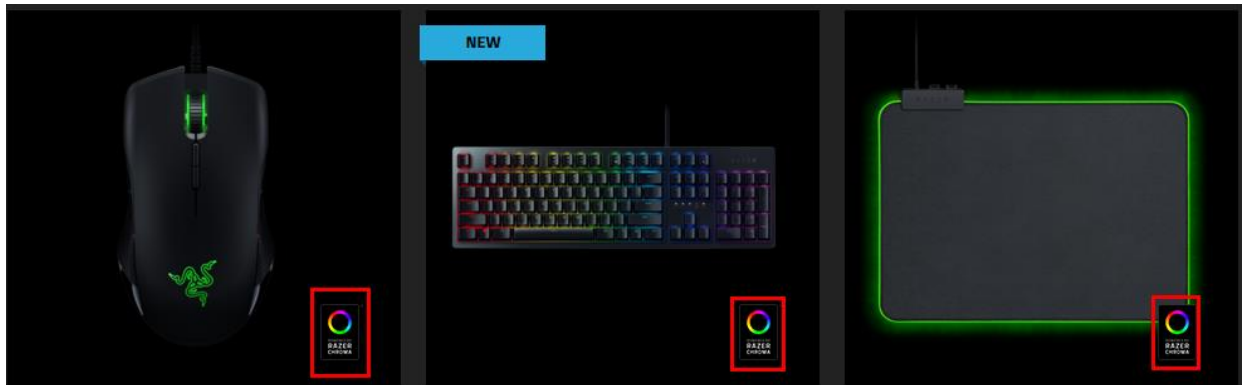


TT RGB Plus x Razer Chroma Synchronization Guide

A. Make sure your Razer devices support Razer Chroma

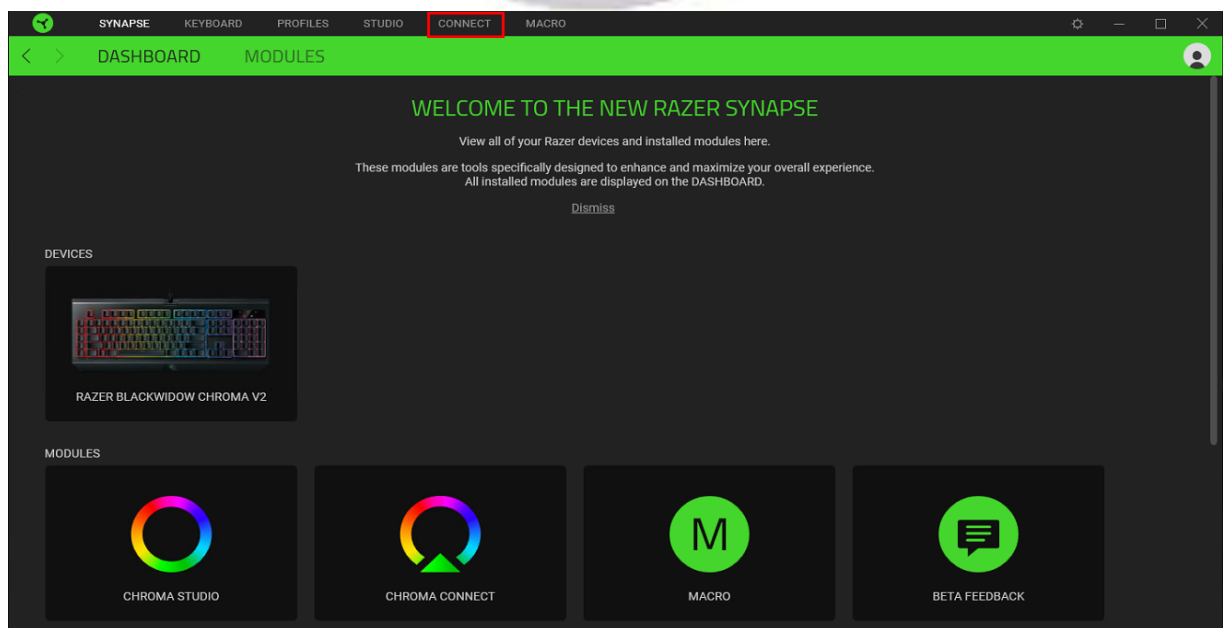
Make sure your product has a **Chroma** logo on the website as shown in the picture below.

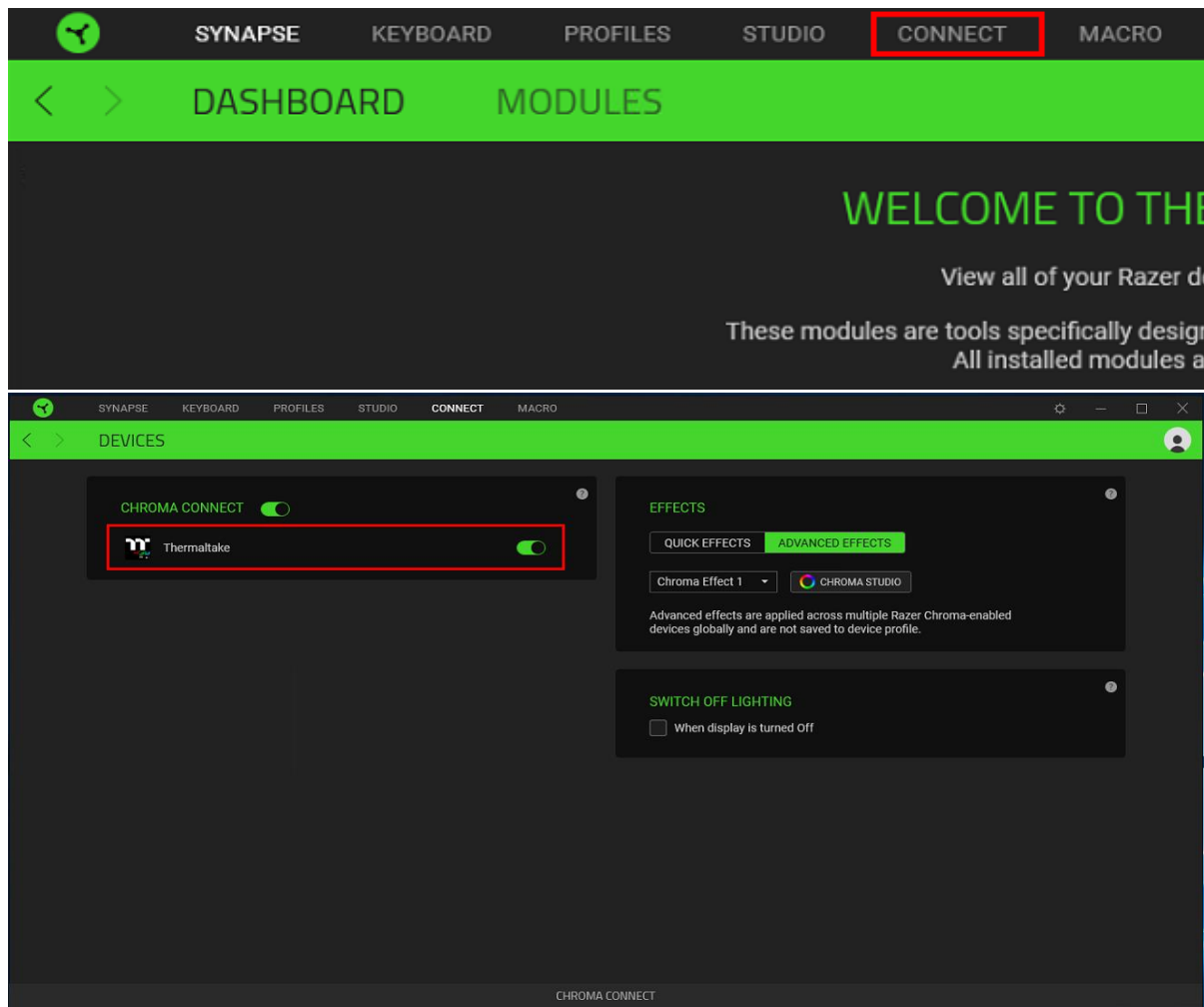


https://www.razer.com/chroma?_ga=2.101672776.812084303.1542784026-1008358540.1537494711 (Razer products supported list)

B. Open "Razer Synapse" and Enable "TT RGB Plus" Connection

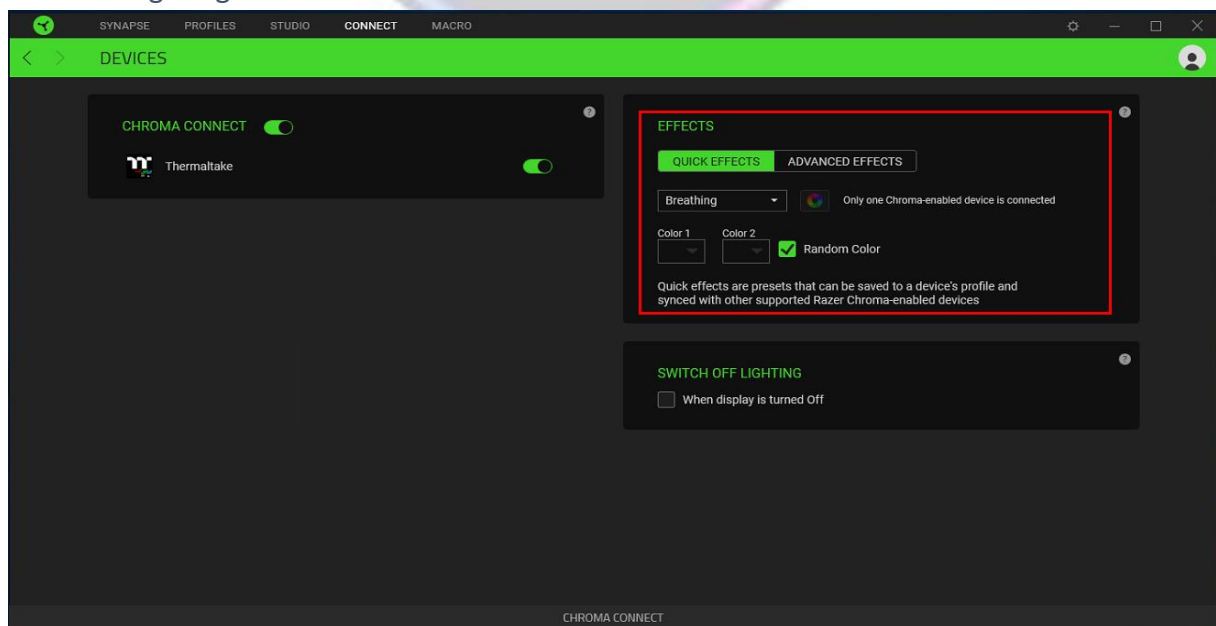
Click "CONNECT" and enable "Thermaltake" label.

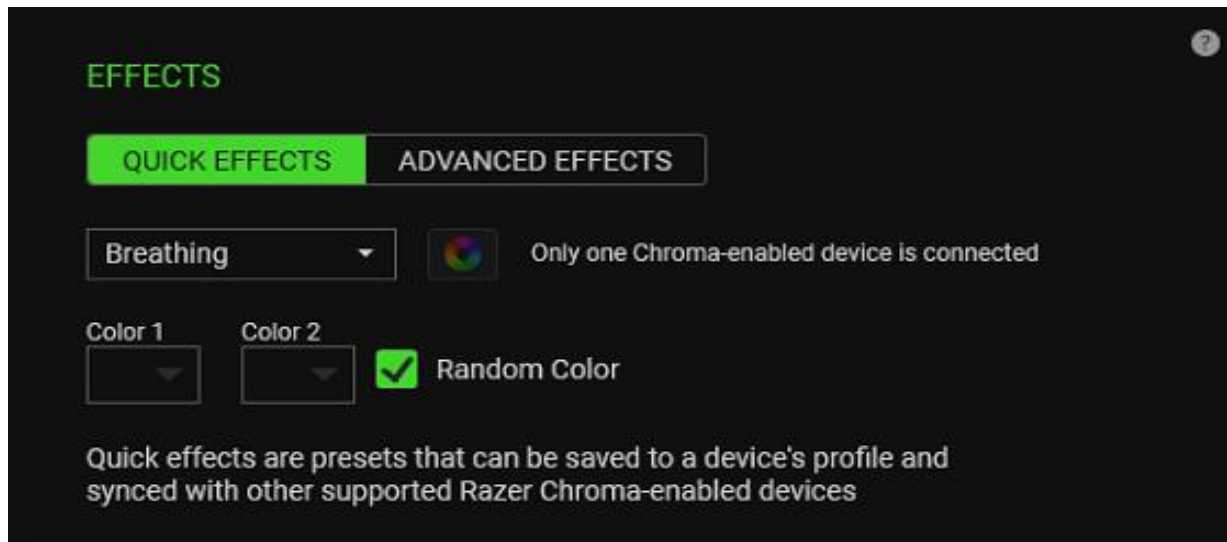




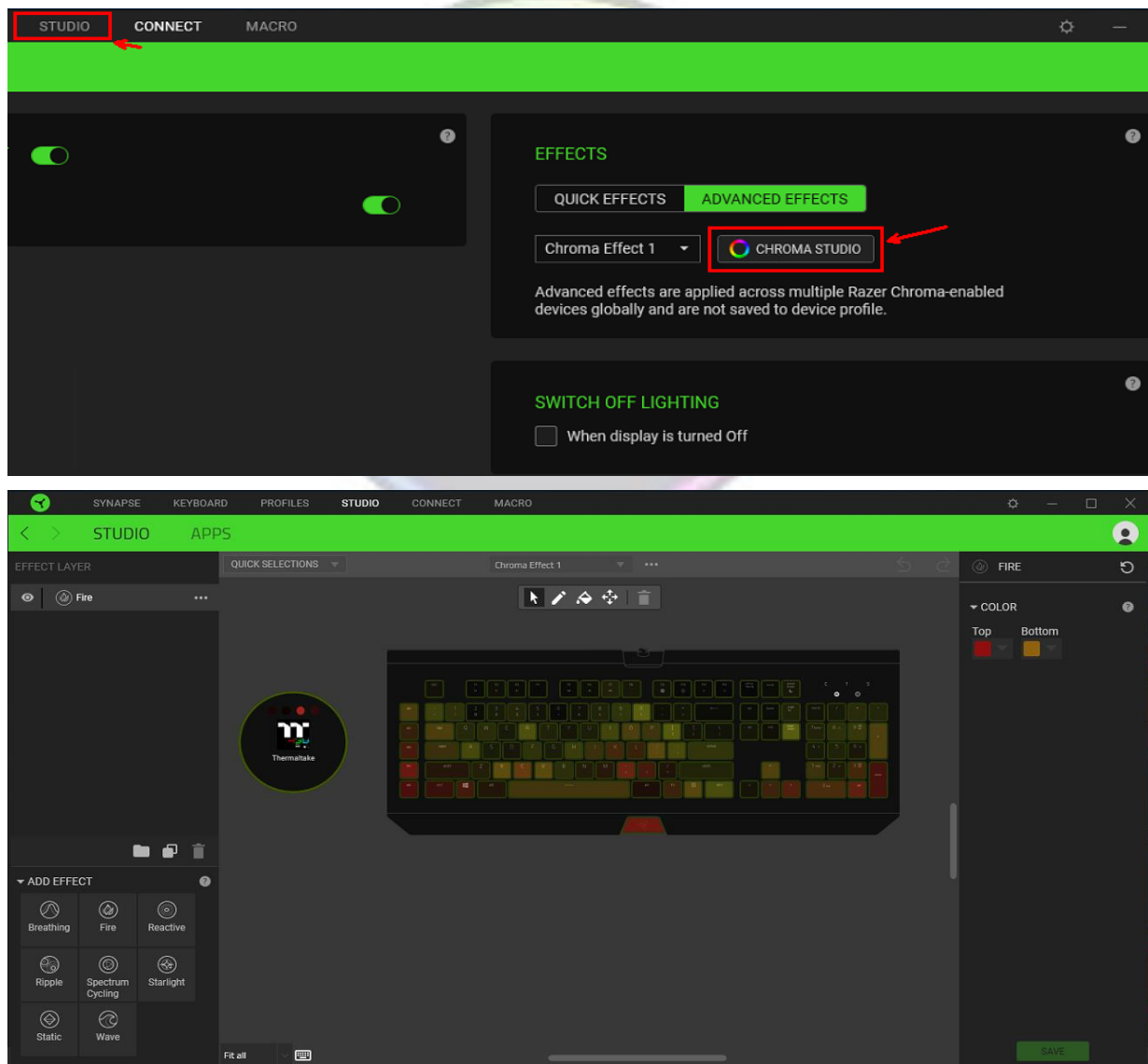
C. Set Your Lighting Effects

Choose a lighting effect.





Or also you can customize lighting effects yourself.



D. Sync “TT RGB Plus” with Razer Chroma Effects

Click “setting”, then enable “Chroma Connect”



E. If it shows “Razer Connecting” on the screen, it is successfully connected to Razer Chroma!



FAQ:

1. Error message “Could not synchronize Razer Chroma, please check the Razer Chroma is installed and executed.”



➔ Please make sure your “Razer Synapse” has already enabled Thermaltake